



MARCH 2024

NEWSLETTER

The weather is getting warmer and spring seems to be in the air! This is also the time when P.E.O. chapters are at their busiest! The president's letters have been coming in fast and furious, chapters are preparing for annual reports, and new officers are getting elected and installed! If you are one of the new officers, "Congratulations", you have taken a huge step to help your chapter! It is an awesome although sometimes overwhelming endeavor. It is also one of the most rewarding experiences you may ever have! Although it shouldn't be overwhelming and I am here to tell you why. We have resources to help you and your chapter pledges their willing support. This is "part" of that mutual bond that we all promise to adhere to.

We have resources! P.E.O. is probably one of the best organizations with the most resources that you will ever find! Have you seen the new website? Have you been able to find what you are looking for? If you have or haven't, I rest my case! The new website is a plethora of information and resources! Let me help you out. The IOLC or Instructions of Local Chapter is going to be your best friend. Almost anything you need to know you will find in the IOLC. If you can't find it in there, you can look in the Constitution. The new Constitution was recently mailed in the winter mailing from International. The resources never end from our projects, to programs, membership to history you will learn something. Spend some time on the website or use their new search engine, that is new and improved! Leadership tools are available. There are many videos and information to help you on your journey as a chapter officer or a committee chair. There are also your own chapter sisters, they are another source of help and information. That is why scheduling a transition meeting is a MUST. There is valuable information in what your chapter sisters can teach and share with you.

Let's visit a little bit about the "mutual bond" part. As a member of a chapter, we also promise to "give our cheerful, ready support, and cooperation". As a member of a chapter just because we aren't an officer, that doesn't mean you are "off the hook". In fact, we are also obligated. While you may not have an actionable "job" at meetings, we did just say we are ready to give our support and cooperation. Yes, as P.E.O.'s we believe in those "mutual bonds" whether it is during an officer installation or an initiation we all have duties that we promise we will do. Perhaps it is to help an officer, or to mentor a newer member, it may be to fill a spot for a program or hostess. Maybe it's to check on a sick sister whatever the case, remember it takes all of us to do "a little work". This is what makes us a sisterhood! Our "jobs" are never really done or at least they shouldn't be. Our mutual bonds of sister are what makes us special and unique. We are never alone. As an active member of a chapter, our role is to see what we can do to help and support our chapter sisters.

I hope as new officers that puts some of your fears to rest. There will be bumps along the way, but being sisters, those bumps won't be difficult they are just an opportunity for a sister to come to your rescue! And isn't that what sisters do best?

Lovingly,
Kellie

Upcoming Events:

March 1-10:

- Annual Report of the Corresponding Secretary (ARCS) due online
- Annual Reports of Treasurer Annual Dues Report will be online. (Dues will be sent with check to Sheri Rasmussen)
- LCOW via Zoom for Southeast Area

June 7-9

- State Convention in Kearney, NE

Corresponding Secretary:

Please report your new chapter officers and your chapter delegates and alternates as soon as possible after installation. See page 6 for instructions!

Chapter Officers:

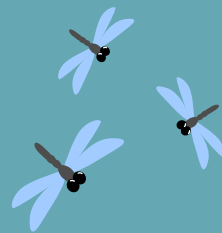
The IOLC has been updated!

Please print it out for your new chapter officers!

The IOLC is a vital tool in officer transition training!



ELF Update



Hello Sisters, as we head into spring and the school year begins to wrap up it's a great time to be listening for women who are ready to pursue the next step in their educational journey. Do you know of a woman who is looking to go further with her education? Someone who just needs a little help financially.

The ELF is more than just money, it empowers women to succeed. If you know of a woman who meets all the qualifications, chances are favorable that she will be approved for the low interest loan and supported throughout her academic journey. Not sure how to find great ELF candidates? The International Website has provided some great tips for finding the women who would be great applicants:

1. Community Connections: Spread the word in your community by displaying the updated ELF flyer in spaces frequented by educators, health professionals and community members. These avenues create connections that can lead to potential ELF candidates.
2. Nurturing Past Connections: The women your chapter previously sponsored for other P.E.O. grants or scholarships could be prospective ELF loan recipients. Reach out to them if they are continuing their educational journey.
3. Academic Alliances: Forge partnerships with local educational institutions like community colleges, universities and trade schools. Engage their financial aid offices and women groups on campus to identify potential ELF applicants.
4. Collaborative Outreach: Join hands with nearby P.E.O. chapters within your state to expand your search. Your State ELF project chair is a valuable resource to facilitate this collective effort.
5. Chapter Engagement: Elevate ELF awareness within your local chapter events. Keep copies of the updated ELF flyer on hand to share. By actively engaging your chapter, you create a network of support and increase visibility.

March is a great time to find your ELF candidate and help them find that pot of educational support gold at the end of the rainbow.

As always, please reach out if you have questions.

Cristy Fryzek, State ELF Chair

Chapter IV, Hickman

cristy.fryzek@gmail.com

ANNUAL REPORTS

This training is highly recommended for smooth online processing.

Training will cover these important steps:

- Report Dues - Treasurer
- Verify Membership Information - Corresponding Secretary
- Review and Approve - President
- IRS-LC Form

The [training video](#) is available on the International website.

Local chapter presidents, treasurers and corresponding secretaries will receive an email on March 1 notifying them the annual report system is available. Local chapters complete annual reports, March 1-10

New Chapter:

Chapter IZ Gretna

Our next meetings for our new Gretna

Chapter is

Thursday, March 7th at 7:00 pm

Thursday, April 4th at 7:00 pm

At the Waters Edge Church

193rd & Harrison

Come join the fun or organizing a new chapter!!

LCOW 2024

*Together
We Can!*

It's time for training and you are invited! Nebraska's Local Chapter Officer Workshop (LCOW) is planned for Saturday, April 6th at 10:00am. If you have been/will be installed as a 2024-2025 chapter officer, this training is for you.

Your Nebraska state executive board will provide this officer training via Zoom. This year's training is for the Southeast Group but with Zoom allowing 100 participants per account, this allows officers from other groups to attend the Zoom Call as well, until 100 participants are registered. Officers from the Southeast Group will receive an invite to the training a couple of weeks prior to the training.* Officers will need to register to attend. For those officers outside of the Southeast Group, you will need to contact LCOW Planner, Jane Van Horn, Vice President of NSC to receive the registration link.

The specific officer trainers are listed here.

Office of President or Vice President: President Kellie Stang
Office of Corresponding Secretary: Vice President Jane Van Horn
Office of Treasurer: Organizer Jean Matheny
Office of Recording Secretary: Treasurer Beth Anderson
Office of Guard or Chaplain: Secretary Amy Dusenbery



Before attending the workshop, make sure you have read your officer duties in the [IOLC \(Instructions to Officers of Local Chapters\)](#) and reviewed the officer There are also training videos available to help in understanding the duties of your office.

Help make your chapter the best it can be by attending LCOW 2024!

*Please make sure that the 2024-2025 officers are updated on the International Website. This will ensure that the current officers will receive the invite for LCOW.

Southeast Group:

F	K	V	Z	AI	AO	AT	AU	AV
BD	BF	BR	BT	BY	CF	CS-DK	CY	DI
DL	DM	DN	EE	ES	FB	FF-IA	FG	FM
FQ	FV	FW	FX	GJ	GQ	GV	GW	HD
HE	HW	IL	IN	I P	IU	IV	IY	



Thank you for saying “Yes”

One BIG Thank you!

While you are reading this, officers are getting installed all across P.E.O. Nation! We are so blessed to have women who step up to serve. Being an officer in your local chapter, gives you the opportunity to develop leadership skills through training and experience. The training comes from finding resources online through the P.E.O. International website, seeking out support from friends/sisters who have held the office before, as well as natural skills that you may have but have not had the chance to use. Great resources are the chapter toolboxes on both the International and the Nebraska State websites.

One of the first things to learn as an officer is to never be afraid to ask questions. Many women, over the 155 years of P.E.O., have come into an officer position by faith: faith that there will be those to help and support you; faith that your sisters will forgive those small blips that may happen (like say mispronouncing a word—very minor); faith that during struggles, your sisters will support you, provide for you and just be there for you in those times of need.

Secondly, look through the materials that were received during the officer transition. Make sure you have everything you need to get the job done. One of those important things that should be in your materials are job descriptions and job duties. (Hopefully, you will have looked at these things prior to accepting the nomination, but sometimes, you accept on faith. I am just being honest!)

Third, be prepared for the year. Think about when your position will be busy. The treasurer, obviously, is going to be busier during the end of the year when many chapters hold their philanthropic events, as well as collecting dues. The Recording Secretary has duties at every meeting, to take those meeting minutes. The guard, while responsibilities have evolved, is still a very important part of the initiation ceremony.

Thank you to those who have stepped up to the plate and taken on one of those officer roles. Thank you to the local project chairs, the calling tree, the nominating committee and every single sister in our sisterhood. YOU ALL play an important part in empowering women through education and through our sisterhood. Have a great 2024–2025 year in P.E.O.

Lovingly,

Jane Van Horn Nebraska State Chapter Vice President

TIME OF REMEMBRANCE

THOSE CHAPTERS THAT HAVE HAD
MEMBERS ENTER CHAPTER ETERNAL
FROM MARCH 1, 2023-MARCH 1, 2024
PLEASE SEND PHOTOS WITH MEMBERS
NAME, date of death AND CHAPTER
LETTERS BY APRIL 30TH TO :
btasseme@hotmail.com

P.E.O. Scholar Awards



We are eagerly awaiting two documents from P.E.O. International: the complete list of PSA candidates successfully nominated by Nebraska chapters in 2023 and the complete list of Nebraska chapters who have qualified as PSA Laureate Chapters!

During this time of anticipation, we can also look toward the future. Although your local chapter P.E.O. Scholar Awards chairman and her committee are essential to the process of interviewing and formally nominating your chapter's new PSA candidate, each individual P.E.O. plays a critical role in identifying that stellar potential candidate.

Now is the time to think of relatives, friends, perhaps an acquaintance's daughter whose accomplishments in graduate school have caught your attention. Find out if she is within two years of completing her Ph.D. or doctorate at an accredited university in the U.S. or Canada. If she is, you have a potential PSA candidate!

Let's all start thinking now of potential candidates for the prestigious P.E.O. Scholar Awards!

Laura Marvel Wunderlich, HT
NE State PSA chair
719-207-3198



Chapter Bylaws



It is that time of year again to turn in your chapter bylaws to the state secretary. Amy is looking forward to reviewing them. Due to CIC, there are both mandatory changes and the optional change about emailing your chapter minutes. Last month we prepared a document to help you with both. Remember the International dues have increased by \$5.00. We are including the [link](#) here again for your review and to help you with your wording.

Bylaws are due to Amy, the state secretary, by March 31, 2024! Please be courteous and get these to her as soon as they are finalized. EVERY chapter will need to send their CHAPTER BYLAWS to her. To respond "No changes" is not an option this year as every chapter bylaws have changed.

Email bylaws to: amydpeo@gmail.com.

Instructions on Reporting your Chapter Officers and Convention Delegate and Alternate



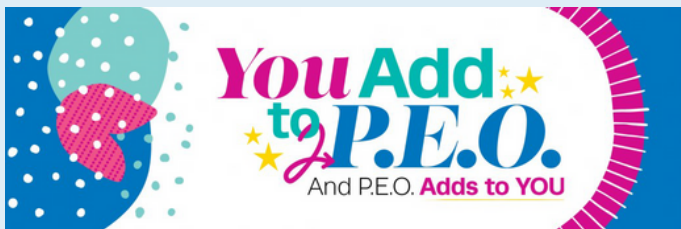
Immediately following your March meeting, the corresponding secretary (outgoing or incoming--you decide!) must report your newly elected and installed chapter officers and state convention delegate and alternate on the International website. Here's the pathway to find what you need to accomplish these important tasks. Remember, at some point, you will be asked to log in with your email address and personal password.

- [Link to Report of Election of Officers of Local Chapters](#)
 - Upon opening the page, click on the gold button "Download Resources".
 - The page will open and the entries can be made. The submissions are similar to what they have been in the past.
- [Link to Report of Delegate and Alternate to State Convention](#)
 - Upon opening the page, click on the gold button "View Resource".
 - The page will open and the entries can be made. The submissions are similar to what they have been in the past.

Please ensure that ALL entries are made and that ALL entry information is correct before submission!

NOTE: While this responsibility is given to the corresponding secretary of the chapter, another member can make these submissions, if need be! The important thing is that are made and done as soon as possible following installation. Future communication to the new chapter leadership depends on it!

ANOTHER NOTE: Remember reporting your delegate and alternate for state convention does NOT register for state convention!



There is still time to Add 2 campaign by initiation or instatement!

Special recognition at convention for those special chapters! You will want to be there!!!

YEARBOOK EVALUATIONS

An updated [yearbook evaluation form](#) can be found on the state website. The form should be completed ahead of time and brought to convention by your delegate along with a copy of your yearbook . There will convention hostesses available to collect them from you!

HONOR'S LUNCHEON

Greetings from the state executive board! We are so excited about our upcoming convention and we hope you are making plans to attend! This year it is my privilege to organize and present the Honors Luncheon. To ensure that all honored members' names are included in the printed program, a list has been created that includes all of those members to be honored and placed on the Nebraska website. Please click the link below to access the list to see if your chapter has member(s) to be honored.

[2024 Honor Members](#)

During this luncheon, we will honor those members who will celebrate their 50 year anniversary of becoming a P.E.O.!! What an exciting and wonderful thing to celebrate!! Those honored were initiated in 1974. All 50-year members in attendance will be recognized during this luncheon. Please email one photo of each member for inclusion in the PowerPoint presentation.


Also, the name of any member who is celebrating her 55, 60, 65, 70, 75 or 80th anniversary as a P.E.O. will be included in the printed program. I would love to include them in the PowerPoint presentation. Please email a photo of these sisters as well.

Be sure that all photos are clearly labeled with their name, chapter letters and years of membership. Send them, via email, to me at amydpeo@gmail.com by April 1, 2024. In the subject line, please write P.E.O. Honors Luncheon Photo. If you have any questions, please don't hesitate to email or call! I look forward to receiving your photos and celebrating with all of you at the Younes Center in June!

Lovingly in P.E.O.,

Amy Dusenbery, Secretary
Nebraska P.E.O. State Executive Board
amydpeo@gmail.com
402-202-7801




NEW INFORMATION ABOUT THE CIF
There is an updated and simplified Chapter Information Form-CIF that each chapter is asked to complete. Click on the link to access the form. Save the document in Word and email it to PSP Joyce Victor at jovictor@outlook.com by April 15th

Cotley Announcement



The partnership between Cotley and the WEMA Health Foundation in Nairobi, Kenya will support the education of underprivileged girls and young women in Kenya. The Foundation, historically focused on providing scholarships for high school education, will now expand its efforts to assist these young women in pursuing college education. Based in Nairobi but reaching participants across Kenya, the WEMA Health Foundation caters to girls and women aged 7 to 38. The Foundation covers various aspects of their education, including tuition fees, uniforms, transportation, and footwear.

Cotley's collaboration with the WEMA Health Foundation involves providing financial support to enable these young women to access higher education. The partnership aims to facilitate the transition of deserving students from the Foundation to Cotley, offering them opportunities for a college education. Cotley hopes to welcome multiple students from the WEMA Health Foundation annually.

Randon Coffey
Vice President for Communications and Strategic Initiatives
Cotley College



Convention Information

ATTENTION SISTERS!

Online registration for the 2024 Nebraska State Convention will have hard and fast numbers and deadlines this year. There are several large events at the Younes Center on the same weekend as our convention. Keep these three things in mind:

1. There will absolutely be NO rooms available once we fill our block of rooms. You will be asked to find your own accommodations at that point. We will not be allowed to overbook and use the block room rates. (Also, remember that a double room may mean one bed and one sofa bed. We ran into this a bit last year and we need to remember that this is a hotel assignment. We submit a rooming list, and each hotel selects the rooms. Thank you for understanding.)
2. The deadline for the meal counts will be firm as well, no additions once the count has been turned in. That date will be posted when the Younes Center lets us know.
3. Checks for amount due MUST arrive by the due date. Late checks will be returned and those spaces reassigned.

Please plan ahead carefully so we can make best use of the spaces available to us.

Who's Who at Nebraska State P.E.O. Convention:

Online Registration Categories

It is important to understand the registration categories when completing the online registration for Nebraska State P.E.O. Convention. These categories will determine voting rights and "entitled" designation. The "entitled" designation means registrants are eligible to have housing and meal expenses paid by Nebraska State Chapter. Each registrant will be verified, and room assignments cannot be completed until the correct registration category is confirmed.

Entitled Members of Convention of Nebraska State Chapter - Voting

In accordance with the Nebraska State Chapter Bylaws, these registration categories are included as Members of Convention. Each registrant who qualifies for one of these categories is entitled to one (1) vote. Housing and certain convention meals are paid for by Nebraska State Chapter for Members of Convention.

All voting members of convention are to attend all official functions of Nebraska State Convention, including Friday evening workshops, delegate orientation, Saturday business meeting, Honors Luncheon, Philanthropies Banquet, Time of Remembrance, and the Sunday business meeting. We highly encourage all voting members of convention to experience and enjoy the displays, shopping opportunities, networking opportunities, and hospitality of the convention hostesses.

- Local Chapter Delegate: One (1) voting delegate is allowed for every local chapter within the state of Nebraska.
- Nebraska State Executive Board Officers: The current Nebraska state president, vice president, organizer, treasurer, and secretary.
- Past State President (PSP): All those who have served as president of Nebraska State Chapter.
- Nebraska State Standing Committee/Project Chair: The Nebraska state chair of Amendments & Recommendations, Chapter Groupings, Cottey Committee, Finance & Budget, Historian, Membership Development Committee, Memorial Markers, P.E.O. Educational Loan Fund, P.E.O International Peace Scholarship, P.E.O. Program for Continuing Education, P.E.O. Scholar Awards, P.E.O. STAR Scholarship
- Nebraska P.E.O. Home Board of Directors: all members

Entitled Members of Convention of Nebraska State Chapter – Non-Voting

These members are asked to be a part of the convention. Each registrant who qualifies for one of these categories will have their room and certain meals paid by either Nebraska State Chapter or the Convention Hostess Group.

- 2024 Core Convention Committee
- 2025 Core Convention Committee
- Convention Guards
- Convention Minutes Committee
- Convention Pages
- Convention Pianist
- Convention Technology Coordinator
- Nebraska State Cottey Committee Members
- Nebraska State Incoming Project/Standing Committee Chair
- Nebraska State International Representative
- Nebraska State Membership Development Committee Members
- Nebraska State New Chapter Development Coordinator
- Nebraska State Paid Assistant Secretary/Treasurer
- Nebraska State Unaffiliate Member Coordinator



Who's Who at Nebraska State P.E.O. Convention:

Online Registration Categories

Not Entitled/Nonvoting Members of Convention of Nebraska State Chapter

These members are sisters and others who do not qualify for housing, meals, or are entitled to vote. They must register to obtain a name badge that allows them into convention.

Visitors

A Visitor is a P.E.O. sister who chooses to pay her own way to the Nebraska State Convention. She is welcome to attend all convention events and functions but is under no obligation to participate.

A Visitor may also be a sister who does not require lodging or meals and wishes to see the displays, shop at the store, or attend single events of convention.

Sisters who are only attending the Honor's Luncheon must also fill out an online registration form so a badge will be issued with their luncheon reservation.

All Visitors must register to receive a name badge to be permitted to attend any event.

Guests

For the purpose of registration, a Guest is someone who is NOT a P.E.O. member and who would not attend Nebraska State Convention if not for the primary registrant. This might include BILs, projects speakers, family members, friends, or colleagues. Guests will be registered by the P.E.O. member.

Volunteers

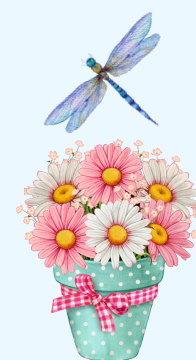
Volunteers are those who dedicate their time and efforts to making the Nebraska State Convention a success! Volunteers must complete a registration form to receive a name badge to be able to work in their assigned area.

Convention Registration is Now Open!

Below are the links that are to be used to register for the 2024 Convention of Nebraska State Chapter. Please read the "Who's Who" above to ensure you fill out the correct form! Deadline for submission in May 5th.

[LINK FOR ENTITLED \(VOTING\) MEMBERS OF CONVENTION](#)

[LINK FOR NON ENTITLED/NONVOTING MEMBERS OF CONVENTION](#)





MARCH 2024

Nebraska P.E.O. Home, 413 North 5th Street, Beatrice, NE 68310-2902

Phone: 402-228-4208

Email: nebraskapeohome@outlook.com

www.nebraskapeohome.org

You DO NOT want to miss the March 2024 Nebraska P.E.O. Home

Newsletter article! Follow the directions below.

Directions:

1. Click on the “live link” below.
2. Clicking the “live link” will open the “home page” of the P.E.O. Home website – on the upper left the phrase “The Home that LOVE Built”, a photo of our Home is featured, and is flanked by daisies.
3. On the bar above the photo of the Home, you will see “headings” on which you can click for more information. (The headings are: Home, ABOUT, Forms, Contact, Notes)
4. To read the Home article, click on the heading titled: “**ABOUT**” – the third item down is “**NEWSLETTERS**”. Click on “**NEWSLETTERS**” and you can read the Newsletter articles from the last year – including the newest which is dated MARCH 2024.



[CLICK THIS LINK TO THE Nebraska P.E.O. Home Website](#)



CHAPTERS THAT SHINE

Chapter AU, Peru NE, showing off their handmade Valentine Hearty Gnomes from our February program led by Barb Jones.



Chapter HD- Lincoln: Making Valentines for the P.E.O. Home for our program Feb. 13

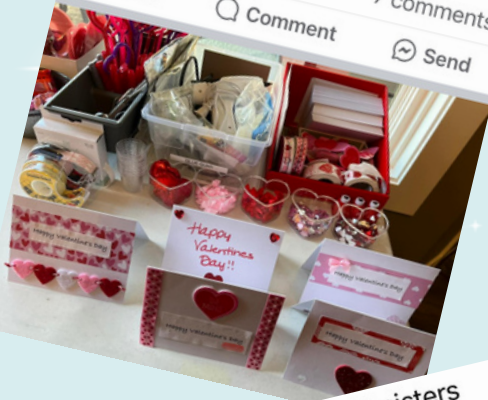
56

Like

Comment

7 comments

Send



Wayne Chapter AZ & Chapter ID sisters cruising the Hawaiian Islands



Celebrating Galentines Day is a tradition for Chapter IY, Lincoln. Chocolate Seasons was a perfect place for our time together.



Chapter BG of Franklin had a fun Galentine's Day celebration! Good food, good fun, and good conversation was had by all!



leave a little
sparkle
wherever you go

