

February 2024

P.E.O. NEWSLETTER



It has been a snowy and cold January and I hope we are onto warmer weather. I hope you were able to stay warm and safe and although it may be a bit, warm weather is coming! February is here and we should be seeing longer days and I hope a little more sun!

For P.E.O.s, it's the start of our busiest time of year. Presidents are preparing their president's letters to be read at your chapter meeting and sent to me. Your nominating committee is busy filling the chapters offices and officers are preparing for annual reports. All officers should be getting ready to exchange supplies and mentoring her new sister that has said yes. This should be an easy step by checking for updates in the IOLC and the winter mailing included new pages to update the president's book. This is such an important part of our organization and should be one of the most important things we can do for EACH OTHER! This makes the officer transition as seamless and adds instruction for our new officers.

Please also check the International website for training for your office. There are wonderful instructions there that are clear and easy to follow that should be used. However, your personal touch and experience enhances one's knowledge and gives that boost of confidence to that sister. Be the sister in the corner cheering her on and letting her know she can do it!

Mentoring each other whether it is a new officer or a new sister is one of the things that sets us apart! We are sisters and that is what we do for each other. This is one way we can "Scatter Love, Sparkle with Grace, Choose to Shine."

Lovingly,
Kellie Stang

Upcoming Events

February 2024

Go to International website and check your email frequently to be informed when Annual Report webinars will occur.

March 2024

Annual Report of Corresponding Secretary (ARCS) due online
Annual Reports of Treasurer
Annual Dues Report will be online.
(IRS-LC will be sent with check to Sheri Rasmussen.

**Election of officers **

Election of state delegate and alternate to state
Entering your elections onto International website

April 2024

LCOW for the southeast group via zoom

June 2024

State convention in Kearney NE
June 7-9, 2024

Watch for more information
Reciprocity IV is excited to welcome you!

P.E.O. Adds 2 You

It is hard to believe that your nominating committees are busy looking for those leaders in your chapter. I hope that if/when you are approached, you are able to say "Yes." It is a compliment to be asked. Your nominating committee looked at those officer positions and chose YOU, to fill that role. They saw in you someone who can help lead your chapter by choosing that appropriate Bible verse, or appreciates your eye for detail and thought recording secretary, or treasurer would be a good fit.

P.E.O. is great in so many ways. Not only is it a women-led organization, it is a sisterhood, where deep and meaningful relationships are formed. Our Sisterhood has helped over 122,000 women fulfill their dreams of furthering their education. Isn't that fabulous! And International Chapter has many resources to help develop your leadership skills. One of those opportunities in your local chapter is taking an officer position. Thoughtfully consider saying "Yes" when asked. You can find a great deal of information on the P.E.O. International website. There are explanations of every office, training videos and written documents to help you understand the responsibilities of each office. Many have said "No" to holding an office because of the unknown. P.E.O. tries to take away the unknown as much as they can with their training and leadership materials.

I might suggest that you ask questions of your chapter officers, look at the International website, shadow a current officer, or, if not an officer, be an assistant to one of the office positions. For our Sisterhood to grow, provide scholarships/loans to students and to be impactful in the community, we need people, like you, who will say "Yes" when asked.

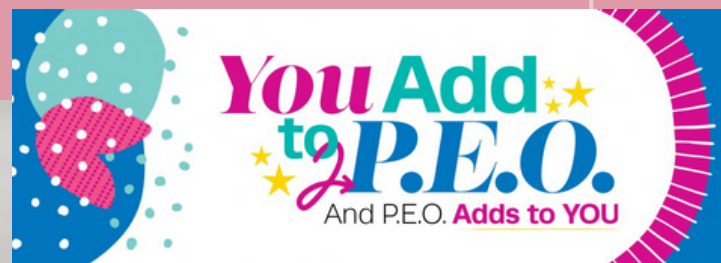
You, too, can add to P.E.O. in your local chapter by saying "Yes" when asked by a nominating committee member to serve. You won't regret it!

Lovingly...Jane Van Horn, VP

Last Call!



We are down to our final month of orders!
Please turn in your chapter order for this Original handmade Nebraska pin!
Pin orders will be available at state convention!
Use the [link](#) to mail the orders to Kellie Stang





Cottery College

The Cottery Committee is DELIGHTED to report that as of January 19th Nebraska has SIX STUDENTS that have applied to Cottery for the 2024-2025 academic year! Five of those students have been accepted and have been invited to apply for our Nebraska Cottery Scholarships. Keep your fingers crossed that they send deposits to Cottery and we see them on campus in the fall!

The five students from Nebraska currently attending Cottery also have their Nebraska Cottery Scholarships applications.

IMAGINE...if all those applicants and all those current students combine forces and make Cottery College their college of choice...Nebraska would have the largest group of students we have enrolled in nearly 20 years! (The last time we had double-digit enrollment from Nebraska was 2004-05 when there were 12 students attending.)

Your referrals are making a difference, sisters! Keep up the good work!

ATTENTION ALL CHAPTERS WHO ADOPTED STUDENTS/SUITES FALL SEMESTER!

We have not yet received the certified list of student enrollment for the second semester, therefore we cannot confirm that all the adoptees have returned to campus. We will let you know as soon as we have that certified list! Stay tuned!



President's Letter Reminder

I am looking forward to receiving and reading the President's Letter from each chapter president. This is a great way to celebrate and share your chapter's accomplishments and special moments from the past year. Here is the link for information. The letter needs to be read as an item of new business and approved by the chapter at a meeting in February. Please then email it to me by March 1st as an attachment [Click here for the link](#)





February 2024

Nebraska P.E.O. Home, 413 North 5th Street, Beatrice, NE 68310-2902

Phone: 402-228-4208

Email: nebraskapeohome@outlook.com

Find out about the latest news and happenings at the
Nebraska P.E.O. Home by
reading the Newsletter Article on our website!

Directions:

1. Click on the "live link" below.
2. Clicking the "live link" will open the "home page" of the website – on the upper left the phrase "The Home that LOVE Built", a photo of our Home is featured, and flanked by daisies.
3. On the bar above the photo of the Home, you will see "headings" on which you can click for more information. (The headings are: Home, ABOUT, Forms, Contact, Notes)
4. To read the Home article, click on the heading titled: "ABOUT" – the third item down is "NEWSLETTERS". Click on "NEWSLETTERS" and you can read the Newsletter articles from the last year – including the newest which is dated FEBRUARY 2024.

CLICK THIS LINK TO THE Nebraska P.E.O. Home Website



[Nebraska P.E.O. Home website](#)





Featured Resident of the Month

Marlene Bang

Marlene Bang was born in Devil's Lake, North Dakota. She was raised in Rockford, North Dakota along with one brother and one sister in her family. Sadly, her brother is now gone, but her sister currently lives in Iowa. Marlene's birthday is December 26th . Marlene attended the University of North Dakota and college in Wisconsin. She earned a Bachelor of Arts in speech pathology. She did begin working on a master's degree but was unable to finish.

Marlene has enjoyed a very diverse work history beginning with being a lifeguard. Interestingly, Marlene had to be pulled from the pool, by her brother, as a child. The young boy who caused her to be pulled unconscious from the pool was banned for ten days.

Marlene did work as a speech pathologist and later, she and her husband, George, opened a retail women's clothing store. She worked full time with George until he died at a young age. George and Marlene had three children – Earl, Rob, and Barb. She was a member of the Lutheran Church.

Marlene was active in various organizations – she has been a member of P.E.O. for 67 years. She worked at the International Office for P.E.O. as the Supply Supervisor. She was a member of a sorority at the University of North Dakota. She held membership at the Community Theatre and served as the treasurer. For many years, she was involved with United Way in Newton, Iowa.

Some of Marlene's favorite things include watching murder mysteries, especially "Law and Order" on TV. She has enjoyed reading and playing games on the computer – especially solitaire. She also enjoys Bingo and playing Bridge. She very much likes Asian food and snacking on pretzels and peanuts in the shell. She dislikes Runza. Her favorite color is blue. She enjoys picnics and sitting on the porch in the summer.

New Chapter Meeting!

Spread the love by getting involved with organizing a new chapter!

Gretna Chapter IZ will meet
Feb.8th @ 7:00.

The location is The Water's
Edge Church,
193rd & Harrison.

Presidents & Tech Chairs

PLEASE share this newsletter to ALL members. Only the president and tech contact are receiving this, it **MUST** be forwarded to all members! Without you, vital information will not be passed along so please help us by sending this on to all your members.



Bylaw Information

It is that time of year again to turn in your chapter bylaws to the state secretary. Amy is looking forward to reviewing them. Due to CIC, there are both mandatory changes and the optional change about emailing your chapter minutes. Last month we prepared a document to help you with both. Remember the International dues have increased by \$5.00. We are including the [link](#) here again for your review and to help you with your wording. We also have a recommendation for your membership committee and their duties.

The Membership Committee shall:

- a. Do an annual review of the chapter health and set membership goals.
- b. Give a brief committee report at each chapter meeting.
- c. Present a membership program annually.
- d. Facilitate the mentoring program for new initiates and transfers.
- e. Maintain contact with the chapter's inactive members.

Bylaws are due to Amy, the state secretary, by March 31, 2024! Please be courteous and get these to her as soon as they are finalized. EVERY chapter will need to send their CHAPTER BYLAWS to her. To respond "No changes" is not an option this year as every chapter's bylaws will have changed. Email bylaws to amydpeo@gmail.com.

Annual Reports

Local Chapter Annual Report Training is Coming! Annual Report Online Processing for Local Chapter Presidents, Treasurer and Corresponding Secretary is approaching!

This training is highly recommended for smooth online processing.

Training will cover these important steps:

- **Report Dues – Treasurer**
- **Verify Membership Information – Corresponding Secretary**
- **Review and Approve – President**
- **IRS-LC Form**



The training video will be available after February 1 on the International website.

Local chapter presidents, treasurers and corresponding secretaries will receive an email on March 1 notifying them the annual report system is available. Local chapters complete annual reports, March 1-10



Bylaw change with Dues Increase

Bylaws and Standing Rules update for 2024: The following update does not require a vote by your chapter, as this changes are required due to the amendments that were adopted at the 2023 Convention of International Chapter. **Even though no vote is taken by the chapter, these bylaw changes must be made to each local chapter bylaws.**

Increase in International Dues

An amendment passed which increases our International dues a total of \$10.00 over the next two years.

Note: If you include changes for both 2024 and 2025, you will be current for the Dues of Members Bylaw for International dues. Unless you have a change in your local dues in 2025, no further updates will need to be made.

The first blank will be filled in with total dues for your chapter members: International, state and local dues. The second blank will be filled in with your local chapter dues.

Dues of Members.

The annual dues for 2024-2025 for all active members shall be \$_____. \$31.00 for International dues which includes \$6.00 for Cottey College; \$16.50 for Nebraska State Chapter dues which includes \$6.00 for maintenance of the Nebraska P.E.O. Home, \$6.00 for the General fund and \$4.50 for the Convention Fund; \$_____ for local dues.

The annual dues for 2025-2026 for all active members shall be \$_____. \$36.00 for International dues which includes \$6.00 for Cottey College; \$16.50 for Nebraska State Chapter dues which includes \$6.00 for maintenance of the Nebraska P.E.O. Home, \$6.00 for the General fund and \$4.50 for the Convention Fund; \$_____ for local dues.

PROVISO: The increase of dues to thirty-six dollars (\$36.00) shall be implemented in two steps; an increase of five dollars (\$5.00) to thirty-one dollars (\$31.00) for the 2024 - 2025 fiscal year; and an increase of five dollars (\$5.00) to thirty-six dollars (\$36.00) beginning the 2025 - 2026 fiscal year.

This is what it looks like:

2024-2025

International Chapter Dues \$31.00
(includes \$6.00 for Cottey College)
Nebraska State Chapter Dues \$16.50

Includes:

Maintenance of P.E.O. Home \$6.00
NE State General Fund \$6.00
General Fund \$4.50

Local Dues General Fund \$_____
Total \$_____

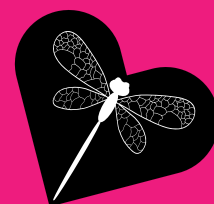
2025-2026

International Chapter Dues \$36.00
(includes \$6.00 for Cottey College)
Nebraska State Chapter Dues \$16.50

Includes:

Maintenance of P.E.O. Home \$6.00
NE State General Fund \$6.00
General Fund \$4.50

Local Dues General Fund \$_____
Total \$_____



For more IMPORTANT information about the other changes and mandates, please click this link.

LOGGING INTO THE STATE WEBSITE

- Login with your Member ID number (seven digits only!) as the username and PEO_2023!@# as the password.
- You will be prompted to enter your email address and create your own personal password. Password requirements will be: 12 characters with at least one upper case, one lower case, one number, and one special character. Once accepted, please remember to write it down!
- After the successful creation of your password, you will be logged out. You can then log in using your Member ID number and new password.
- You are set to go!

*This is for the **state website ONLY!** www.nebraskapeo.org*

INTERNATIONAL WEBSITE

The new P.E.O. International website launch with Single Sign On (SSO) will be unveiled in early February. Each P.E.O. member needs a valid email address on file with International Chapter and a personal password to log in to the site and have access to member protected content. The website will direct members to set up a password (must be at least 12 characters in length and contain at least one numeric, one alphabetic and one special character) the first time; each user will retain her own private password. The executive office will not know member passwords, but a “Forgot Password” feature will be available if you forget or lose your password.

New Information



There is an updated and simplified Chapter Information Form—CIF form that your Corresponding Secretary is asked to do. It is on the **state website** for you to fill out. Please send it to PSP Joyce Victor by April 15th. Please send it in a word document to jovictor@outlook.com.



There is also a new yearbook evaluation form on the state website. Please remember to have it completed. Your delegate should bring the evaluation form and your yearbook and turn them in at convention.

2024 Honors Luncheon

Greetings from the state executive board! We are so excited about our upcoming convention and we hope you are making plans to attend! This year it is my privilege to organize and present the Honors Luncheon. To ensure that all honored members' names are included in the printed program, a list has been created that includes all of those members to be honored and placed on the Nebraska website. Please click the link below to access the list to see if your chapter has member(s) to be honored.



2024 Honor Members

During this luncheon, we will honor those members who will celebrate their 50 year anniversary of becoming a P.E.O.!! What an exciting and wonderful thing to celebrate!! Those honored were initiated in 1974. All 50-year members in attendance will be recognized during this luncheon. Please email one photo of each member for inclusion in the PowerPoint presentation.

Also, the name of any member who is celebrating her 55, 60, 65, 70, 75 or 80th anniversary as a P.E.O. will be included in the printed program. I would love to include them in the PowerPoint presentation. Please email a photo of these sisters as well.

Be sure that all photos are clearly labeled with their name, chapter letters and years of membership. Send them, via email, to me at amydpeo@gmail.com by April 1, 2024. In the subject line, please write P.E.O. Honors Luncheon Photo. If you have any questions, please don't hesitate to email or call! I look forward to receiving your photos and celebrating with all of you at the Younes Center in June!

Lovingly in P.E.O.,

Amy Dusenbery, Secretary
Nebraska P.E.O. State Executive Board
amydpeo@gmail.com
402-202-7801

*Happy
valentine's
day*





Shining Chapters



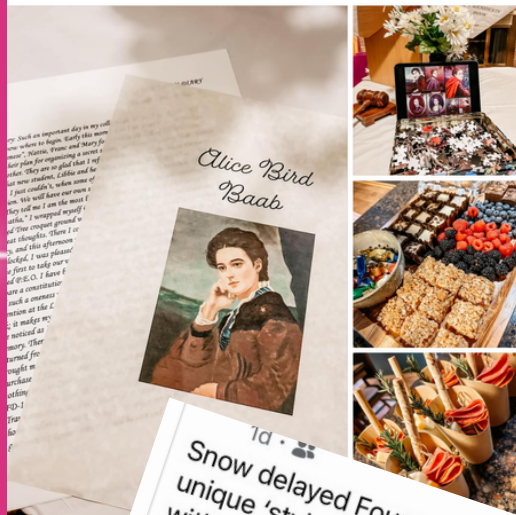
The North Platte chapters celebrated Founders' Day with a wonderful meal and a rousing game of Daisy (P.E.O. bingo)! Thanks to all the Chapter GO sisters for hosting event. It was great to be together!



Chapter H celebrated Founders' Day on this cold afternoon. Following our meeting, Shanel Hytrek an... See more



Chapter AM-Fairmont held our January meeting last night. Our Founder's Day program included reading excerpts from our seven founders' diaries. We also had a puzzle on display, made by [Kelsey Vnoucek](#), of our seven Founders. And, I wanted to include the d... See more



Snow delayed Founders Day -saw a unique 'style show', fun and friendship with Chapters FM and Z in Beatrice



leave a little
sparkle
wherever you go

