

Surrounded by Love,
Encircled with Strength

Hello,

WOW, it is now November and Thanksgiving festivities will be under way very shortly.

Your executive board met November 19 via Zoom. One good thing that came out of COVID was that your board can meet monthly. It is always wonderful to see each other and discuss things that are occurring in our state chapter along with International.

Reciprocity meetings, along with visitations, have been occurring. These two events are highlights for your executive board each year. There is some travel but getting to meet so many wonderful women puts a smile on all of our faces.

Proceedings have been printed and should be arriving very soon. The last checks and dotting the last "i" will finalize the first in person convention in 2 years. Thank you to Reciprocity II & IX with the leadership of Jan Moore, EY, Julie Schenk, EY, Beth Anderson, DU, Joanne Stewart, BK and Joanie Wellensiek, CP. Oh what a great feeling having the 132nd convention complete.

Your next convention group, Reciprocity III & X, are already at work in planning next year's convention to be held on June 9-11, 2023 in Kearney at the Younes Center South.

Have a wonderful Thanksgiving!
I am thankful for God, family and my P.E.O. relationships.

Top news of the month:

December 15, 2022

is the deadline to send project donations to Sheri Rasmussen.

Organizer: It's a New Season in P.E.O.
Jane Van Horn

Vice President: Fun Chapter Activities
Kellie Stang

STAR Scholarship: Chapter Meeting snippet.
Crystal Klein, FS

ELF: Thankful for your ELF
Kelly Robare, FQ

P.E.O. Home update
Lisa Helmick, GF, PSP



State Leadership Change

Please welcome to our Finance & Budget Committee:

Gayle Knoll-Bruner, BI Shelton

We are so happy to add her to our Leadership List.

We wish Kris Koubek, EH and her husband all the best as they make a new home out of state and thank her for her willingness to serve.

The current Leadership List is available on our website



Chapter events and key dates.

November 10, 2022

Send new reciprocity officers, location & minutes to Kellie Stang

November 20, 2022

Last Day to Submit P.E.O. Scholarship Award Nomination Forms

December 15, 2022

Project Donations sent to Assistant Secretary/Treasurer Sheri Rasmussen

December 15, 2022

The last day to submit an IPS Eligibility

Sept. 21-23, 2023

International Convention

nebraskapeo.org/members

DEADLINES



November Deadlines

The deadline for the \$20,000 P.E.O. Scholar Award is fast approaching! It is November 20, at 11:59 p.m. EST! Hoping you have your chapter's letter for your nomination ready to submit in the next few days! And don't forget to email me with your nominee's name.

Thank you,

Jerri Haussler, Nebraska PSA Chair (jhaussler@windstream.net)

Please add your new reciprocity officers to the International website. You received a notebook at your meeting that explains exactly how to do this. Follow your checklist that was also included in your notebook to help Kellie Stang finish her required reports. Due November 10.



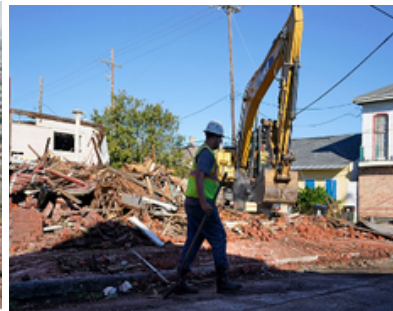
Vote on your Chapter Project Donations.

If you haven't already, it is time to vote on chapter donations to the projects. You can find the donation form in the Resource Library, Local Chapter Toolbox, on the Nebraska website. They must be sent to Sheri Rasmussen by December 15 in order to be counted on the 2022 Gift List. Her address is on the form. **Vote this month!!!!**



NEWS FROM FLORIDA

UPDATE ON HURRICANE IAN EFFECT ON OUR P.E.O. SISTERS



Latest News From Florida State Chapter

Many of you have asked if there is anything your chapters may do to help our sisters in Florida that are slowly recovering from Hurricane Ian.

I received this from the President of Florida State Chapter.

Here is how your chapter can help if you so desire.

Dear Chapter Presidents,

Please contact Florida executive secretary, Nancy Morgan (386-689-5225; nbmorganpeo@gmail.com; 428 Bouchelle Drive #204, New Smyrna Beach, FL 32169-5502) if you have questions concerning Florida State Chapters or simply send gift cards which we will disseminate to those who request assistance. Any gift cards must be for **\$25 or less** and we can suggest places like gas stations, grocery stores, pharmacies, big box stores, Amazon, or other national chains that have a presence in southwest Florida. You can also choose your own relief agency such as American Red Cross, Salvation Army, Heart of Florida United Way, or local food banks. There are many “boots on the ground” organizations that will need financial support to help the victims of Ian. Thank you Janet Brown, FSC President

What our sisters do best is share their loving concern and support.

ELF & STAR SCHOLARSHIP

EDUCATIONAL LOAN FUND(ELF)

Crisp November greetings, Sisters! In the spirit of Thanksgiving, I'd like to say that I'm thankful for your ELF questions, contributions, and the amazing support you give our applicants. If your chapter has not had an applicant this year, it's not too late - there's no submission deadline, and prospective ELF recipients are everywhere!

It's also not too late to make a significant impact to this equal opportunity financial lifesaver; why not level up by becoming a Legacy Chapter? All it takes is a lump sum chapter donation (or individual contribution, specifying the chapter to be credited) of \$500 or more to the Educational Loan Fund. Chapters making this gift by January 31 will receive a certificate of recognition in addition to being listed on the Educational Loan Fund pages of the P.E.O. International member website - and the satisfaction of knowing they're ensuring accessible education for future ELF generations!

Rich Fall Blessings to you and yours,
Kelly Robare, FQ
Educational Loan Fund Chair

MAKE A
DIFFERENCE



STAR Scholarship....

In P.E.O., when a need is recognized, a study group is formed and this is exactly what happened with STAR. P.E.O.s wished for a localized project, they craved a conduit to talk about P.E.O. in the local community and they desired a magnet to find younger members. In the words of Founder Franc Roads Elliott: "P.E.O.s should ever keep their eyes forward to note the possibilities of the future..."

The first trustees awarded 151 STAR Scholarships in 2009 and the numbers have climbed to 900 scholarships for 2022-2023 - \$377,500 to \$2.5 million. Who knows what the future holds?

Crystal Klein, FS
STAR Scholarship Chair

Message from your Organizer

IT'S A NEW SEASON
IN P.E.O.

I don't know about you, but I think this fall has been crazy! Not only did we go from summer temps in October, but we experienced one of the coldest days on record! It was surreal to see all of the leaves on the trees on day and the next, they are all laying on the ground!

This, I like to think, is a metaphor for P.E.O. There are times when are chapters are so HOT! There is a lot of joy amongst the sisters, money is being raised for projects and you can't imagine your chapter being in a better place.

And then, there are those times when all of the petals fall off of your daisy. You are struggling to find officers, money is tight and you worry how you are going to fund your projects and you just don't think the mood of the chapter is a good atmosphere to bring in new sisters.

What do you do during those times when it is such a struggle? Go jump in the leaves!!! Well, I am kidding, only kind of. Remember when you were young and you couldn't wait to rake up the orange, brown, red and even purple leaves that had fallen to the ground. You felt the crisp air on your face but you didn't mind the work because the reward was well worth it. Jumping in the leaves could make a doldrum day into one of the best.



Sit back and think why you got involved in P.E.O.; it was for the fellowship, because all of the women in your family were P.E.O.s or you wanted to know what it was all about. You wanted to be a part of an organization that supported women in continuing their education. Who would not want to be involved in an organization that did so many great things to empower women to be their best?

When you are down and don't see hope, think about those times when there was so much laughter, so much love and joy and you knew what you were doing made an impact in the lives of many.

Do some fun things at your meeting; have some socials that bring that laughter and joy; start small groups that allow sisters to gather outside of regular meetings. Invite your friends and family to those socials and small groups and let them hear the great things that P.E.O. does annually. Think out of the box! Are their sisters that felt those doldrums so much that they did not pay their dues? Reach out to them, aske them how they are. Invite them to your socials and small groups and let them know how they are missed and how they can, once again, be a part of the P.E.O. sisterhood.

The international website has wonderful resources to put excitement back in your chapter meetings. There are videos and documents that focus on leadership. You also have the resources of your state officers.

Take the time to jump in the leaves of P.E.O. and remember why it is such a valuable organization for all of those women who need support, either financially or socially. Remember that your fundraising goes to support those women who want to better their lives, which in turn will better the lives of so many.

You, do, add to P.E.O. and P.E.O. adds to you. Have a great fall!

Jane Van Horn, NSC Organizer

GREETINGS FROM YOUR VICE PRESIDENT



By Kellie Stang, NSC Vice President

HAPPY FALL EVERYONE,

As we head into the holiday season, why don't we take a little time and do some fun programs with our P.E.O. sisters. This is a great time to work on our relationships with our chapter. Below is a link with some potential programs to promote and build a stronger bond within our chapter.

<https://members.peointernational.org/resource/fostering-friendships-through-peo>

Now is the time to come together and make us stronger. Remember President Renee's theme, "Surrounded by love" what better way to show love than by learning more about each other. "Encircled with Strength", by sharing things about ourselves and others strengthens your chapter and enriches our lives.

Do you have some ideas of your own that your chapter has done? If you'd like to share these ideas with me, send me a quick email and a description of what you have done.

**BUILDING A
STRONG
COMMUNITY
WITH
GRATITUDE**

Expressions of Appreciation

- Surprise a busy sister with a home cooked meal and conversation.
- During roll call, after responding "present", ask each sister to give a statement of gratitude.
- Donate to a project in a sister's name.
- On your next vacation, send a sister a postcard.
- Prepare and take her that recipe she always loves of yours.
- Create a chapter gratitude journal to share with chapter sisters.

P.E.O. HOME NEWS

Monthly Newsletter Info from Lisa Helmick, PSP



SAD NEWS

With sadness and sympathy for the family, resident Elinor Caves, from Lincoln, passed away on October 18, 2022. Elinor was born on August 1, 1930 making her 92 at the time of her death. Elinor was well loved and enjoyed by residents and staff. Her happy and enthusiastic personality was always a joy. She will be very missed.

RESIDENT UPDATE

As of this writing, we continue to have 16 residents with a waiting list. Because of our positive Covid tests in the last couple of months, we have not taken in any new residents, but arrangements are being worked on for at least one new resident in the coming weeks. Will keep you posted when that, and likely more, women move in.

UPDATE ABOUT VISITS:

At this time, no group tours are being given of our Home. --When tours are being given again, in small groups, by current Home staff members or Board Directors, we will be sure to let you know.

THANK YOU -- RECIPROCITY GROUP MEETINGS

Thank you for welcoming a P.E.O. Home Board Director, or other designee, to your fall 2022 Reciprocity meetings. Of course, we enjoy seeing our Nebraska sisters all over the state, and sharing the most current news from our beloved Home. Thank you to all RG officers adjusting your agendas for our reports

NEW NEEDS FOR RESIDENTS



At your fall Reciprocity meeting, you may have read or heard about the “Funny Money” shopping our residents can do for participating in activities and some is given for, maybe, no reason at all! Cindy, the Activities Director has a little “store” where Residents can spend their Funny Money. The “store” began with some purchases from Dollar Tree for residents to purchase. The FM Store is a HUGE HIT and if you and/or your chapter would like to donate for their shopping experiences, these are some suggestions:

- Candy bars (even snack-sized), small bags of trail mix, chips, nuts, Chex mix, and the like*
- Lightly-scented body sprays*
- Lipsticks. (these do not need to be “expensive”)*
- Face powder compacts (again, do not need to be “expensive”)*
- Small (and “small” was emphasized) purses - to carry Kleenex, lipstick, and compacts*
- Necklace and Earring sets - both clip and pierced earrings are fine*
- Holiday signs to hang on Resident room doors*

ANOTHER NEED:

Now that cold and flu season is here, Shari reports that ALL of the individual packets of Kleenex are now gone - there had been a four-year supply of those. FULL-SIZE boxes of Kleenex are always needed.

PRICES: SHAMPOO
AND SET = \$15
HAIR CUT = \$15
COLOR = \$50
PERM = \$45

ADOPT A RESIDENT OR STAFF MEMBER

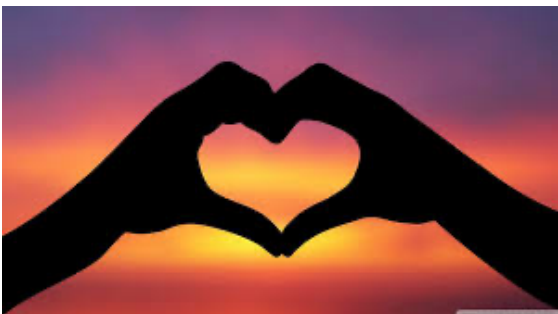
ADOPT PROGRAMS and HOME BEAUTY SHOP CERTIFICATES:

*If you have questions about the Adopt Programs you may
contact ROSE FETTY at: rfetty89@yahoo.com*

*Please review the October Nebraska State Newsletter to
remind your chapter members about “Beauty Shop” protocols
and prices.*

CONTINUED NEED -- MONETARY DONATIONS NEEDED

*We would still appreciate monetary
donations for cloth tablecloths,
placemats, and cloth napkins. Our
residents DO share their thoughts
and ideas as to color, patterns, etc.
Staff will then make the purchases
to coordinate or match products.*



YOUR LOVE BUILT OUR HOME
AND YOUR LOVE MAINTAINS IT.

SEEKING NEW P.E.O. HOME BOARD DIRECTOR:
THANK YOU TO THOSE WHO HAVE ALREADY
COMPLETED THE PROCESS. IF YOU ARE STILL
INTERESTED, PLEASE SEE THE NEBRASKA
STATE NEWSLETTERS IN JULY, AUGUST,
SEPTEMBER, AND OCTOBER FOR THE FULL
EXPLANATION OF THE PROCESS. DEADLINE
FOR COMPLETING YOUR PART OF THE PROCESS
IS DECEMBER 1, 2022. YOU MAY CONTACT
BOARD PRESIDENT, LISA HELMICK IF YOU HAVE
QUESTIONS: LISAPEO@COX.NET

ROSE FETTY, NOMINATING CHAIR, P.E.O. HOME BOARD
OF DIRECTORS

421 NORTH 16TH STREET, BEATRICE, NE 68310-3115

HOME PHONE: 402-223-5842

EMAIL: RFETTY89@YAHOO.COM

*HEARTFELT THANKS to our Nebraska Chapters and Sisters who help to meet the
needs of our beloved P.E.O. Home. You make a difference in quality of life for our
Residents AND you build the morale of our staff members.*